

DP-S

Volume dispenser of powdered or granulated products

Compact and strong, the DP-S powder dispensers are ideal for optimally dispensing all types of powdered or granulated products.



APPLICATION:

Dispensing of all types of powdered or granulated products. Standard operations for grain sizes below 260 μm and product density of less than 1400 kg/m^3 .

Automatic dispensing for continuous or load-based processes.

It has many different applications at both laboratory and industrial or commercial level:

- In the water treatment industry to dispense reactants such as solid polyelectrolytes, bisulphites, etc.
- In the food industry to dispense semolina, flavourings, additives, etc.
- In the paper industry for processes such as the addition of fibres or paper quality identifiers.
- In the mining or ceramic industry in the preparing of solutions.
- In all types of industry in general: chemical, pharmaceutical, etc.

MAIN FEATURES:

DP-S volume dispensers are designed to ensure a constant, precise flow of all powdered products. They consist of a dispensing chamber made of AISI-304 stainless steel, which includes a product blending and homogenising auger and an output duct with a dispensing auger.

DP-S dispensers are very easy to start-up and maintain, at a relatively low cost.

DP-S dispensers are driven by an electric motor with a frequency changer built into their terminal box, equipped with a speed control panel and a double helical gear train, allowing for the flow rate to be controlled to between 10% and 100% of the maximum flow.

The precision varies according to the properties of the dispensed product, i.e. from 0.5% to 3%. This precision is obtained through a correct supply from the dispensing auger of the output duct and for which a product of even density must be fed through.

In order to ensure the continuous homogenisation of the homogenised product to be dispensed, thus ensuring the dispensing flow, a bladed agitator is fitted that rotates at a different speed over the dispensing auger.

The output flows obtained on standard versions range from 2.4 l/h to 4,226 L/h.

DPS units are very compact and strongly built and the different models can be adapted to all conditions of use thanks to the exchangeability of different components.

There are two basic models of DP-S dispensers:

- DP-S 30/31 for products with a density of up to 1,000 kg/m^3 and a grain size of 180 μm . Flow of up to 373 l/h. The DPS-30 is fitted with a 25 l hopper as standard.
- DP-S 350/31 for products with a density of up to 1,400 kg/m^3 and a grain size of 260 μm . Flow of up to 4,226 l/h.

The flow range available on each model is determined according to the dispensing auger installed, which gives the powdered product greater or lesser capacity to move, and to the output speed of the electromechanical drive. The maximum and minimum theoretical flow rates are indicated below, according to the type of dispensing auger used. The flow rates are for standard ducts, augers and drives. The flow rates must be adjusted to suit the actual product to be dispensed. Please ask us about adapting this data to your process.



DP-S 30/31 Model				DP-S 350 Model			
FLOW RATE ⁽¹⁾ (l/h)		DISPENSING AUGER		FLOW RATE ⁽¹⁾ (l/h)		DISPENSING AUGER	
Min.	Max.	Type	Speed range	Min.	Max.	Type	Speed range
1.2	11.9	03	13.8 -138	44.3	443	13	17.2 -172
6.2	62.3	04	13.8 -138	84.8	848	14	17.2 -172
21.4	213.7	05	13.8 -138	242.6	2.426	15	17.2 -172
37.4	373.7	06	13.8 -138	422.6	4.226	16	17.2 -172

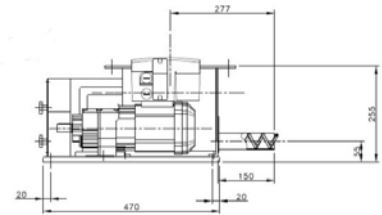
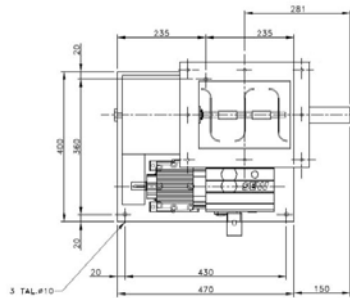
(1) Theoretical flow rate for output = 1

ACCESSORIES AND OPTIONS:

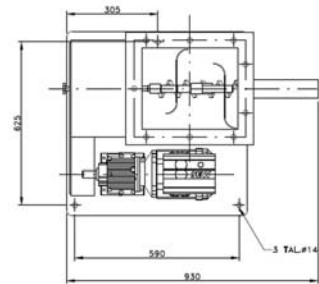
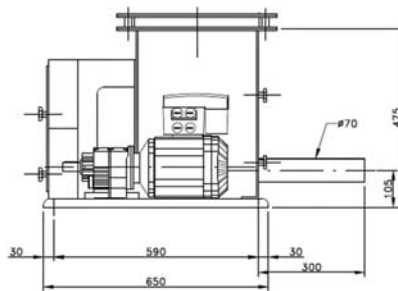
A wide range of accessories and options is available:

- Hoppers for storage of the product to be dispensed in different volumes or shapes (according to product or process requirements).
- Hopper vibration device.
- Level sensors.
- Extended augers and ducts.
- Special ducts: vertical discharge, for products, high-density, etc...
- Auger and dispenser auger linings.

DP-S 30/31 MODEL



DP-S 350 MODEL



C/ Embajadores, 100
28012 Madrid (España)
Tel. (+34) 91 353 18 13
Fax (+34) 91 345 97 07
info@sdm-sistemas.com

Para más información, visite nuestra WEB: www.sdm-sistemas.com

For further information visit or website at www.sdm-sistemas.com